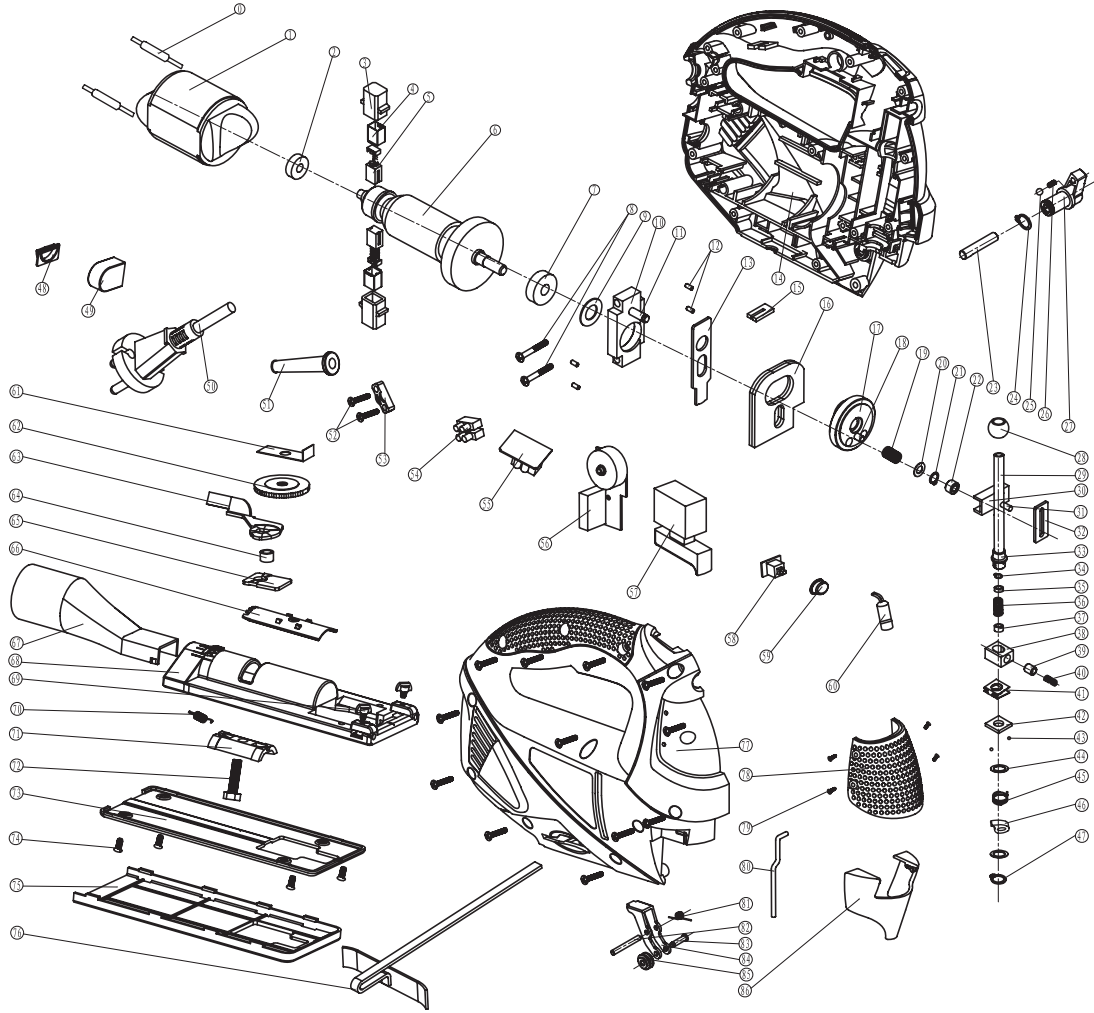


EXPLODED VIEW OF RDP-JS21



PARTS LIST RDP-JS21

№	Description	№	Description
42	DUST-PROOF BLOCK II	86	TRANSPARENT GUIDE
41	PENDULUM RESET SPRING	85	PENDULUM RACK ROLLER
40	RESETTING SPRING	84	PENDULUM RACK
39	PESETTING PIN	83	PENDULUM RACK ROLLER SHAFT
38	UNDERNEATH SLIDE BUSH	82	PENDULUM RACK POSITION SHAFT
37	BLADE LEADER	81	RESETTING SPRING FOR PENDULUM RACK
36	SPRING 2	80	CIRCLIP
35	WASHER	79	SCREW ST2*8
34	OPEN WASHER	78	DECORATED BOARD
33	QUICK RELEASE HEX WRENCH	77	RIGHT HOUSING
32	POSITION PLATE OF RECIPROCATING POLE	76	GUILDING RULER
31	ROUND PIN	75	BASE PLATE COVER
30	RECIPROCATING POLE RUNNER	74	SCREW M4*10
29	RECIPROCATING POLE	73	ALU. BASE PLATE
28	UPPER SLIDE BUSH Ø8	72	SCREW M6*20
27	PENDULUM KNOB	71	BASE PLATE ANCHORAGE
26	SPRING	70	BASE PLATE SPRING
25	STEEL BALL	69	GUILDING CLAMPING SPANNER
24	CIRCLIP	68	ALU. BASE PLATE
23	AXIS OF PENDULUM ADJUSTMENT	67	DUST-PIPE TIE-IN
22	ROLLER BUSH	66	BASE PLATE POSITION BOARD
21	CIRCLIP	65	QUICK POSITION BOARD
20	SMALL WASHER	64	BASE PLATE POSITION BOARD AXIS COVER
19	NEDDLE COVER	63	QUICK CHANGE SPANNER
18	SHAFT	62	KNOB
17	GEAR	61	POSITION BOARD
16	PENDULUM BALANCE BLOCK	60	LASER HEAD
15	DUST-PROOF BLOCK II	59	LASER KNOB
14	LEFT HOUSING	58	LASER SWITCH PLUG BOARD
13	SUPPORT PLATE	57	SINGLE SPEED SWITCH
12	NEEDLE	56	ADJUSTMENT SPEED BOARD
11	ROUND PIN	55	TRANSFORMER
10	CENTER BRACKET	54	TERMINAL
9	WASHER	53	CORD ANCHORAGE
8	SCREW ST4*30	52	SCREW ST4*16
7	BEARING 629	51	CORD SLEEVE
6	ARMATURE	50	CABLE
5	CARBON BRUSH	49	WORKING INDICATOR
4	COPPER SLEVE	48	WORKING INDICATOR COVER
3	BRUSH HOLDER	47	SPRING WASHER
2	BEARING 607	46	RESET SPANNER
1	STATOR	45	SPRING
0	INDUCTANCE	44	WASHER
		43	STEEL BALL